

# 2021-2022

# BITE2GO SCHOOL YEAR

# REPORT CARD

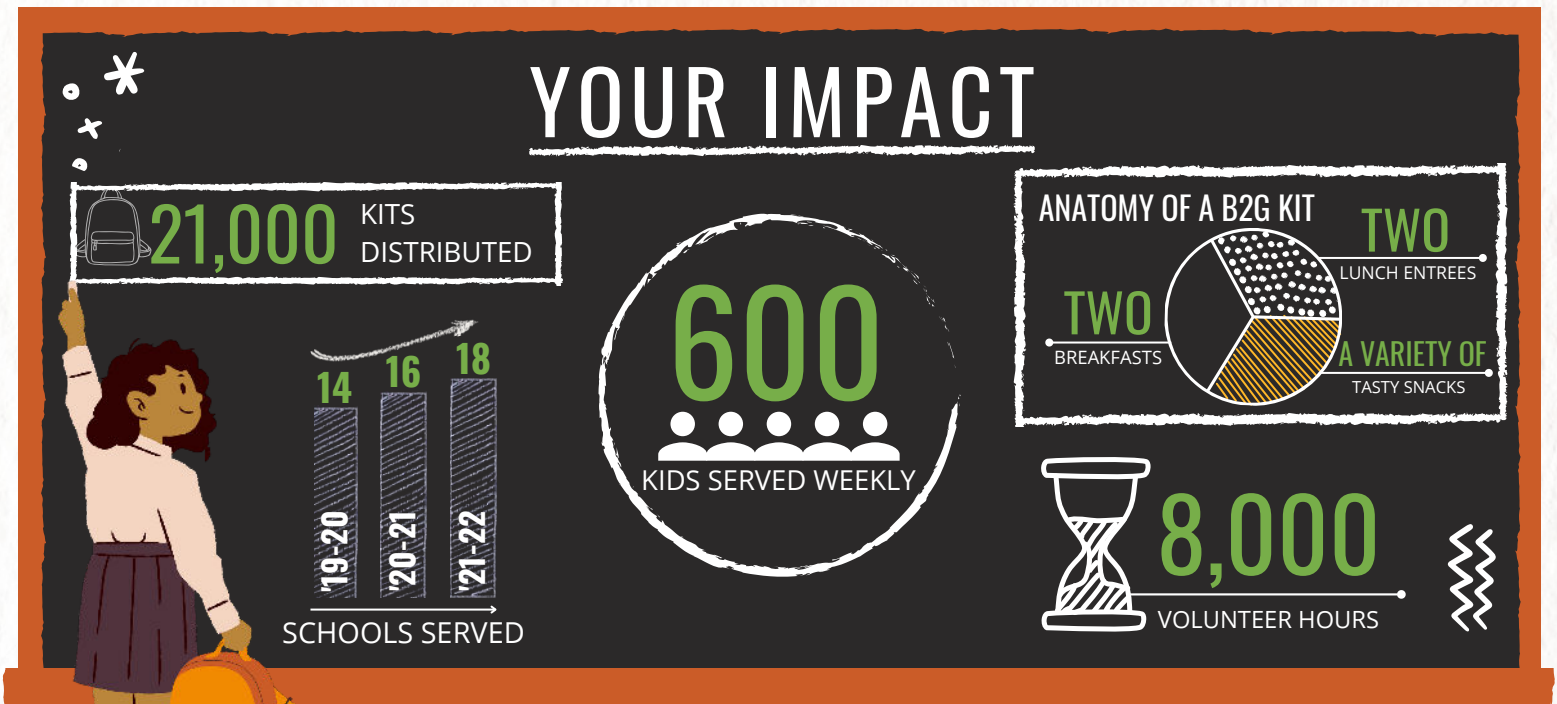


## YEAR AT A GLANCE

COVID-19 was still with us through the 2021-22 school year, but it was a relief to all of us to have kids back in school and to be able to distribute Bite2Go through our great network of adoptive organizations and school staff.

Bite2Go helped fill the weekend food gap for nearly **six hundred** students in the Tri-Cities last school year. Thanks to the tremendous generosity of sponsors, including churches, businesses, clubs, and individuals, Bite2Go served **18** elementary schools each week. While many students in Benton and Franklin Counties qualify for free or reduced-price school meals, many of these same kids face chronic food shortages at home and, without Bite2Go, they would not get enough to eat on Saturdays and Sundays.

Bite2Go provides kids with a mix of easy-to-open, single-serving, nutritious, nonperishable food items for meals and snacks over the weekend during the school year. Bite2Go helps kids get the nutrition they need over the weekend, so they come to school ready to learn on Monday morning.



[2-harvest.org](http://2-harvest.org)





## OUR GENEROUS ADOPTIVE ORGANIZATIONS



By the end of the 2021-22 school year, **600 schoolchildren a week at 18 schools were receiving Bite2Go food kits** to fill the weekend food gap. Second Harvest values its partnership with an incredible nonprofit, At The Core (lifeatthecore.org), which has taken the lead in recruiting the following adoptive organizations for **elementary** schools in the Tri-Cities area.

<b>Badger</b> /Bethel Church
<b>Captain Gray</b> /Eastlake Tri-Cities
<b>Eastgate</b> /Kiwanis Young Professionals
<b>Edison</b> /STCU
<b>Emerson</b> /Bethel Church
<b>Jefferson</b> /Bechtel
<b>Lincoln</b> /New Vintage Church
<b>Longfellow</b> /At The Core
<b>Mark Twain</b> /Riverview United Methodist Church & Bechtel
<b>Maya Angelou</b> /Sunrise Rotary
<b>RSD Early Learning Center</b> /All Saints Episcopal Church
<b>Ruth Livingston</b> /Faith Tri-Cities
<b>Southgate</b> /South Hills Church
<b>Tapteal</b> /Bob's Burgers and Brew & Framatome
<b>Vista</b> /The Garden Church
<b>Washington</b> /Bechtel

### OPEN FOR ADOPTION

The following schools are in need of adoptive organizations to support their respective Bite2Go programs.

- **Finley Elementary School**
- **Sunset View Elementary School**

For more information, contact Steve Durham at [steve.durham@2-harvest.org](mailto:steve.durham@2-harvest.org).



## TESTIMONIALS

*Bite2Go has been VERY beneficial for students here at CGSE. It's been a blessing to give students a sense of food security for the weekend. Parents have been very grateful for the program. No parent should worry about how they will feed their children, and no children should worry about where their next meal is coming from."*

**-Andreina Olguin, Captain Gray Elementary**

*"Bechtel helps build the next generation of STEM workers and, to accomplish that, we know that children first need to have enough food. Children who are hungry can't learn. We must ensure children's basic needs are met before they can excel in science, math, engineering or technology."*

**-Staci West, Bechtel**