

2021-2022

BITE2GO SCHOOL YEAR

REPORT CARD

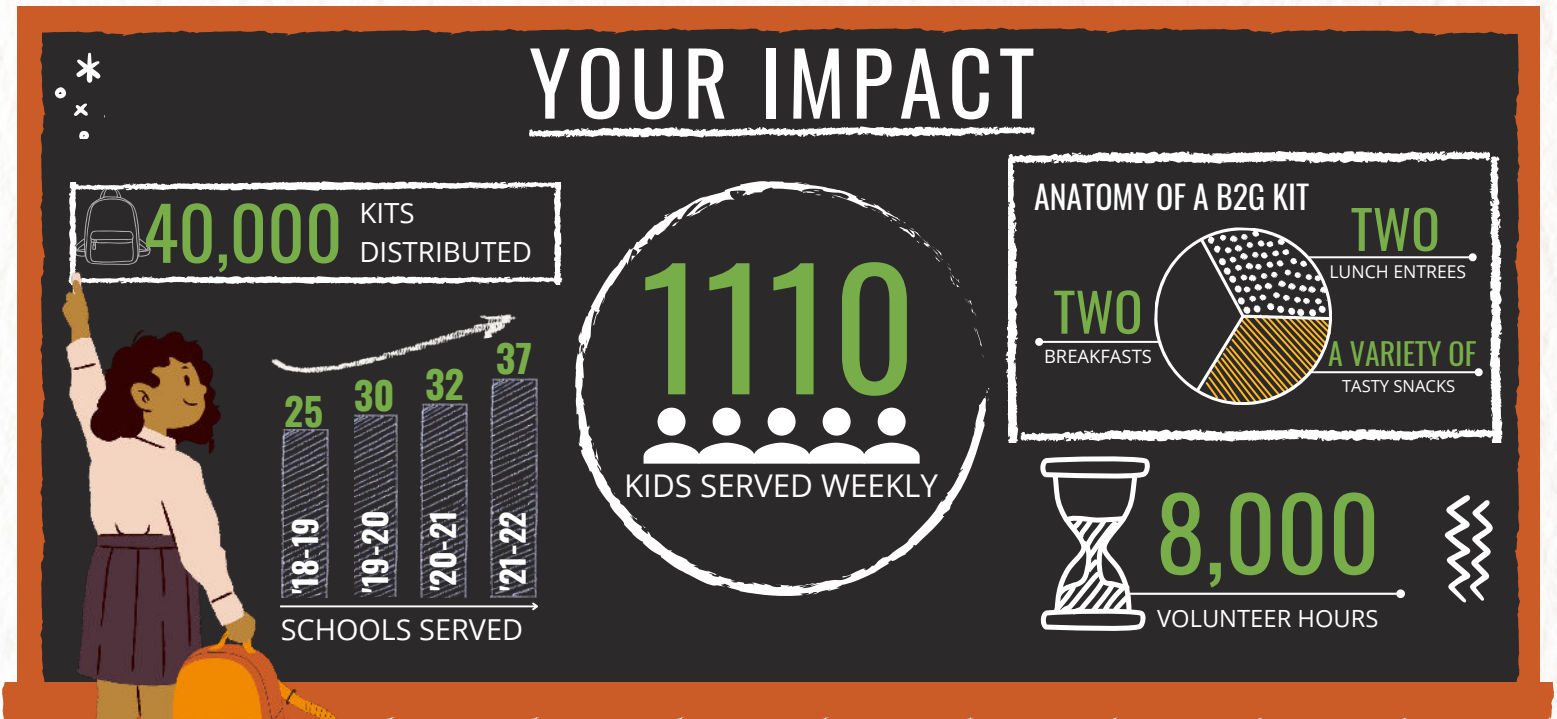


YEAR AT A GLANCE

COVID-19 was still with us through the 2021-22 school year but it was a relief to all of us to have kids back in school and to be able to distribute Bite2Go through our great network of adoptive organizations and school staff.

Second Harvest and At The Core partner with schools and community organizations to help fill the weekend food gap for hungry school kids through Bite2Go. Students choose from a menu of non-perishable items that they can prepare with basic cooking skills and regardless of whether they have access to a full kitchen.

Bite2Go fed nearly **1,110** students each week of the 2021-22 school year. This is thanks, in large part, to the tremendous generosity of sponsors, including churches, businesses, clubs, and individuals who help to fund the Bite2Go program at **37** area middle and high schools. The goal is to continue to expand the Bite2Go XL program into other high-need middle and high schools across the Second Harvest service area.



2-harvest.org



OUR GENEROUS ADOPTIVE ORGANIZATIONS



By the end of the 2021-22 school year, **1,100 schoolchildren a week at 36 schools were receiving Bite2Go food kits** to fill the weekend food gap. Second Harvest values its partnership with an incredible Spokane nonprofit, At The Core (lifeatthecore.org), which has taken the lead in recruiting the following adoptive organizations for middle and high schools in the greater Spokane area.

Centennial Middle School /GESA Credit Union & S&S Health Care	Mountainside Middle School /Whitworth Church & Wandermere Community Service Group
Chase Middle School /Spokane Business Leaders	Mt. Spokane High School /Guardian Life
Cheney High School /Summit Church - Cheney	North Central High School /Morris-Wolff-Turiah
Deer Park High School /Wandermere Real Estate	Northwood Middle School /Wandermere North Spokane
Deer Park Middle School /Christ's Church of Deer Park	On Track Academy /T.W. Clark Construction
East Valley High School /Community Link	Pratt Academy /Seven2
East Valley Middle School /Mission Church*	Pride Prep Middle School /Becker Buick
Ferris High School /Revival Tea	Riverside Middle School /Fievez & Bean
Garry Middle School /Gonzaga Prep	Rogers High School /Sonderen Packaging
Glover Middle School /Empire Health Foundation	Sacajawea Middle School /Lukins & Annis Attorneys at Law
Highland Middle School /Wendle Motors, Hille Family	Salk Middle School /Diesel Power Products
Lakeside High School /Suncrest Family Worship Center	Shadle Park High School /Douglass Properties
Lewis & Clark High School /Clifton Larson Allen	Shaw Middle School /Integrus Architecture
Lakeside Middle School /Suncrest Family Worship Center	The Community School /Wandermere City Group
Liberty Middle School /First Interstate Bank	Three Springs High School /Giving Back Packs*
Lumen High School /First Presbyterian Church*	West Valley High School /Royal Bank Canada & Garth & Lisa Holbert
Mead High School /Guardian Insurance	Westwood Middle School /Flynn Group*
Medical Lake High School /Medical Lake Dental Clinic and Medical Lake Food Bank	Yasuhara Middle School /Smith-Barbieri Progressive Fund*
Medical Lake Middle School /NW Farm Credit Services, DAA Northwest	

"It's meant a lot to us to get out into the community and be part of this effort to help fill these needs in the school. You develop close connections to the people and the school, and you become an important resource to them."

-Deanna Malcom, Douglass Properties

"As a new sponsor for our adopted school, it was inspiring to meet this dynamic class of students and see firsthand their enthusiasm as they assembled Bite2Go meals in such an efficient process. It is evident they have empathy for their peers and have fun while working."

-Mizu Howell, Diesel Power Products



*newly sponsored schools for 2021-22 school year